

46/41

BOCAIRE GOLF CLUB NO. 2

A PLAT OF A PORTION OF SECTION 36, TOWNSHIP 46 SOUTH, RANGE 42 EAST

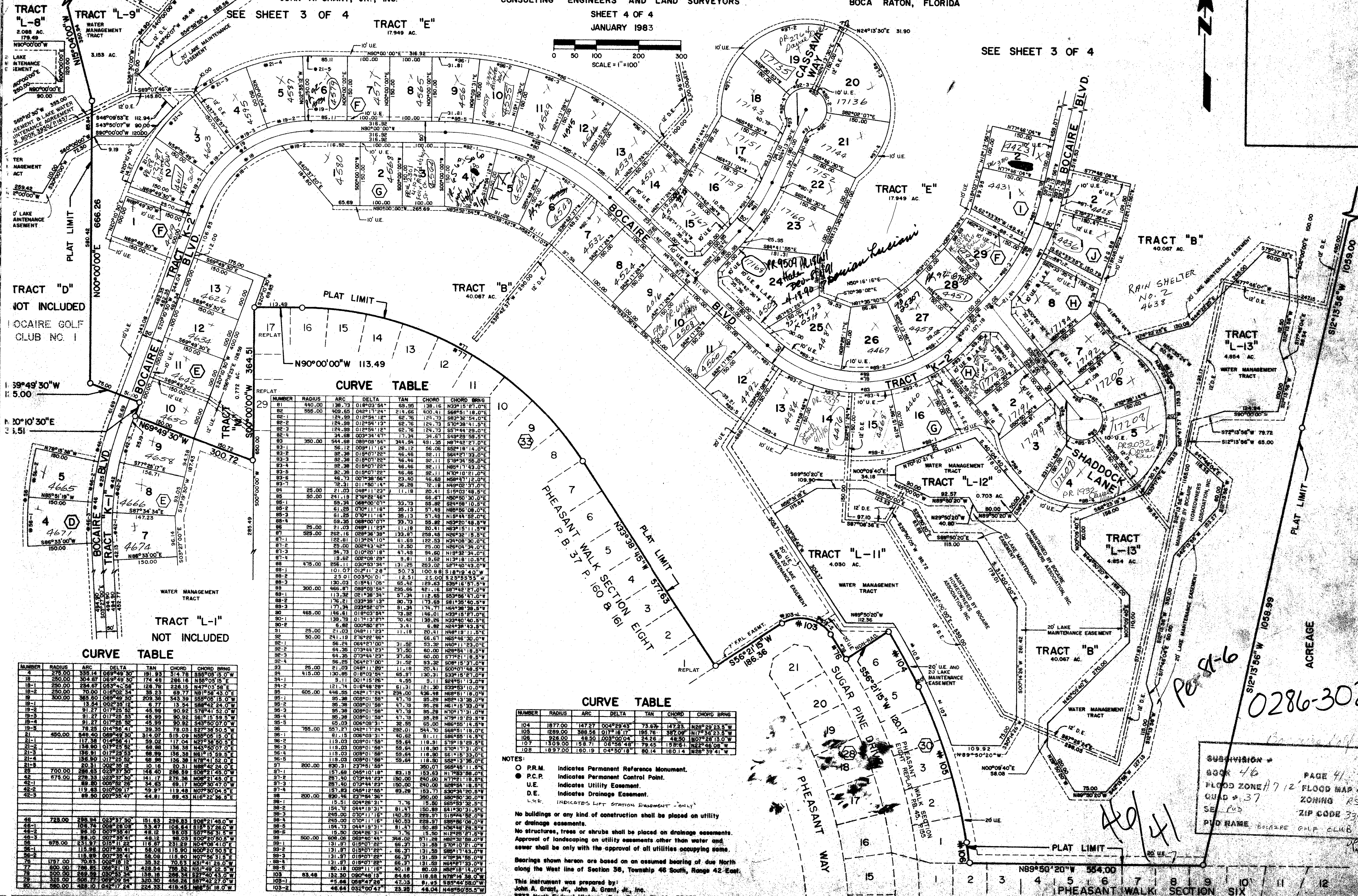
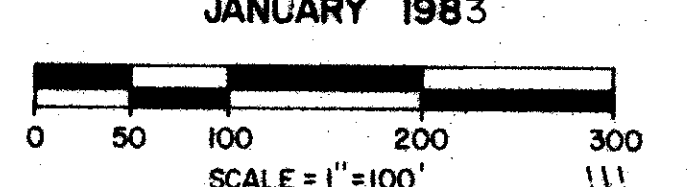
JOHN A. GRANT, JR., INC.
CONSULTING ENGINEERS AND LAND SURVEYORS

BOCA RATON, FLORIDA

SHEET 4 OF 4
JANUARY 1983

SEE SHEET 3 OF 4

SEE SHEET 3 OF 4



CURVE TABLE II

NUMBER	RADIUS	ARC	DELTA	TAN	CHORD	CHORD BRNG
81	440.00	138.73	018°03'54"	69.95	138.16	N32°15'27.0"E
82	555.00	408.65	042°17'24"	214.66	400.41	S68°51'18.0"E
82-1	124.99	012°54'12"	62.76	124.73	S63°32'54.0"E	
82-2	124.99	012°54'12"	62.76	124.73	S10°39'31.5"E	
82-3	34.68	003°34'41"	17.34	34.67	S43°23'58.5"E	
83	350.00	544.68	089°02'54"	344.94	491.35	N87°42'27.0"E
83-1	56.12	003°11'16"	28.12	56.05	S88°18'14.0"E	
83-2	56.12	015°07'22"	46.46	52.11	S84°17'43.0"E	
83-3	56.12	015°07'22"	46.46	52.11	S10°10'21.0"E	
83-4	56.12	015°07'22"	46.46	52.11	N87°17'43.0"E	
83-5	56.12	015°07'22"	46.46	52.11	N10°10'21.0"E	
83-6	56.12	015°07'22"	46.46	52.11	N87°17'43.0"E	
83-7	56.12	015°07'22"	46.46	52.11	N10°10'21.0"E	
83-8	56.12	015°07'22"	46.46	52.11	N87°17'43.0"E	
84	25.00	21.03	048°11'23"	11.18	20.41	S15°03'48.5"E
85	50.00	241.13	27°02'46"	66.67	100.50	S0°50'30.0"E
85-1	50.00	59.24	048°00'00"	33.73	59.24	S89°10'10.0"E
85-2	61.25	070°11'16"	35.13	57.49	N18°44'32.0"E	
85-3	61.25	070°11'16"	35.13	57.49	N18°44'32.0"E	
85-4	59.25	068°00'00"	33.73	55.82	N32°20'48.0"E	
85-5	25.00	21.03	048°11'23"	11.18	20.41	N15°11'13.0"E
87	525.00	722.16	028°36'28"	233.47	259.48	N22°18'18.0"E
87-1	122.61	013°24'10"	61.69	122.53	N34°08'30.0"E	
87-2	25.00	002°43'42"	12.50	25.00	N26°04'34.0"E	
87-3	94.73	010°20'18"	47.43	94.60	N18°32'34.0"E	
87-4	13.45	002°00'28"	3.41	13.45	N13°10'50.0"E	
88	475.00	526.11	030°53'34"	131.25	253.02	S67°40'01.0"E
88-1	101.07	012°28'28"	50.73	100.88	S18°19'40.0"E	
88-2	25.00	21.03	048°11'23"	11.18	20.41	S25°53'53.5"E
88-3	130.00	019°41'03"	95.82	129.63	S35°15'57.5"E	
88-4	300.00	466.87	038°00'54"	239.66	421.15	S53°56'47.0"E
88-5	113.32	021°38'34"	57.34	112.63	S53°56'47.0"E	
88-6	176.21	033°38'13"	80.73	173.69	S81°35'40.5"E	
88-7	177.24	033°38'13"	81.24	174.77	N64°38'38.8"E	
88-8	465.00	146.41	018°03'54"	239.66	421.15	N13°10'50.0"E
90-1	138.73	017°13'21"	70.42	138.26	N33°40'40.5"E	
90-2	6.82	000°50'00"	3.41	6.82	N24°38'43.5"E	
91	25.00	21.03	048°11'23"	11.18	20.41	N48°19'11.5"E
92	50.00	241.13	27°02'46"	66.67	100.50	N54°50'30.0"E
92-1	56.24	064°27'00"	31.92	53.32	N40°11'23.0"E	
92-2	56.24	073°44'23"	37.50	60.00	N28°54'18.5"E	
92-3	56.24	073°44'23"	37.50	60.00	S77°21'18.5"E	
92-4	56.24	064°27'00"	31.92	53.32	S06°15'37.0"E	
93	25.00	21.03	048°11'23"	11.18	20.41	S86°15'37.0"E
94	415.00	130.85	018°03'54"	69.95	130.31	S33°15'27.0"E
94-1	9.11	001°15'26"	4.55	9.11	S84°51'13.0"E	
94-2	121.74	018°46'28"	61.31	121.30	S39°53'10.0"E	
95	605.00	446.25	042°17'24"	239.66	421.15	S53°56'47.0"E
95-1	95.26	009°01'58"	47.19	95.26	N13°35'00.0"E	
95-2	95.26	009°01'58"	47.19	95.26	N61°19'30.0"E	
95-3	95.26	009°01'58"	47.19	95.26	N70°17'31.0"E	
95-4	95.26	009°01'58"	47.19	95.26	N13°35'00.0"E	
95-5	65.00	006°09'31"	32.95	65.00	N85°55'14.5"E	
96	755.00	557.21	042°17'24"	282.01	544.70	S68°51'18.0"E
96-1	81.15	008°09'31"	40.62	81.15	S88°55'14.5"E	
96-2	119.03	009°01'58"	59.84	119.51	S78°18'29.5"E	
96-3	119.03	009°01'58"	59.84	119.51	S70°17'31.0"E	
96-4	119.03	008°01'56"	59.84	119.50	S61°18'33.0"E	
96-5	119.03	008°01'56"	59.84	119.50	S52°13'26.5"E	
97	200.00	157.68	027°46'18"	99.24	150.07	S69°48'11.5"E
97-1	200.00	157.68	027°46'18"	99.24	150.07	N1°03'58.0"E
97-2	297.40	073°44'23"	130.00	240.00	N77°21'18.5"E	
97-3	297.40	073°44'23"	130.00	240.00	S89°54'18.5"E	
97-4	157.68	048°11'23"	77.29	157.77	S30°34'20.5"E	
98	200.00	157.68	027°46'18"	99.24	150.07	S69°48'11.5"E
98-1	15.51	004°26'21"	7.76	15.50	S65°59'32.5"E	
98-2	154.72	044°19'31"	81.47	150.89	S41°30'31.0"E	
98-3	249.00	070°11'16"	140.93	249.97	S19°44'32.0"E	
98-4	249.00	070°11'16"	140.93	249.97	S89°06'00.0"E	
98-5	154.72	044°19'31"	81.47	150.89	N1°03'58.0"E	
98-6	15.50	004°26'21"	7.76	15.50	N12°25'27.5"E	
99	500.00	609.06	038°00'54"	398.02	671.28	N83°35'50.0"E
99-1	131.97	019°07'22"	66.37	131.89	N87°17'43.0"E	
99-2	131.97	019°07'22"	66.37	131.89	N78°18'45.0"E	
99-3	131.97	019°07'22"	66.37	131.89	N69°19'47.0"E	
99-4	131.97	019°07'22"	66.37	131.89	N60°20'49.0"E	
99-5	131.97	019°07'22"	66.37	131.89	N51°21'51.0"E	
100	63.48	132.30	090°48'13"	84.66	118.64	N57°18'18.0"E
100-1	55.84	058°47'29"	47.23	51.95	S85°44'58.0"E	
100-2	46.64	032°00'47"	23.28	44.04	N48°50'55.5"E	

CURVE TABLE

NUMBER	RADIUS	ARC	DELTA	TAN	CHORD	CHORD BRNG
1	275.00	359.14	069°49'30"	191.93	314.78	S56°09'15.0"W
18	250.00	304.67	059°49'30"	174.49	286.16	N56°05'19.0"E
19-1	250.00	224.74	037°28'30"	128.76	226.19	N47°03'58.5"E
19-2	250.00	70.00	018°02'34"	35.13	70.00	S89°10'10.0"E
19	300.00	365.50	069°49'30"	209.36	343.39	S56°05'15.0"W
19-1	13.54	002°35'12"	6.77	13.54	S88°42'24.0"E	
19-2	91.27	017°25'52"	45.98	90.92	S78°41'52.0"E	
19-3	91.27	017°25'52"	45.98	90.92	S21°15'59.5"W	
19-4	91.27	017°25'52"	45.98	90.92	S43°50'07.0"W	
19-5	78.25	014°36'41"	39.35	78.03	S27°38'50.5"E	
21-1	450.00	549.40	038°00'54"	314.07	515.09	N53°05'15.0"E
21-2	118.00	017°25'52"	59.32	117.04	N47°03'58.5"E	
21-3	158.00	017°25'52"	79.76	156.38	N43°50'07.0"E	
21-4	158.00	017°25'52"	79.76	156.38	N15°18'53.5"E	
21-5	158.00	017°25'52"	79.76	156.38	N17°41'52.0"E	
21-6	20.31	002°35'12"	10.16	20.31	N88°42'24.0"E	
21-7	700.00	286.63	023°37'30"	148.40	286.59	S67°40'01.0"E
42	575.00	278.33	023°37'30"	141.17	276.36	N60°21'45.0"E
42-1	89.80	008°26'28"	34.45	89.17	N00°30'47.0"E	
42-2	118.43	010°59'17"	59.87	119.48	N07°30'04.5"E	
42-3	89.80	007°55'47"	44.81	89.43	N16°22'56.5"E	
48	725.00	298.94	023°37'30"	151.63	298.83	S08°21'45.0"W
48-1	104.74	008°26'28"	53.47	104.84	S18°57'26.0"W	
48-2	98.10	007°55'47"	49.12	98.03	S07°56'31.5"W	
48-3	104.74	008°26'28"	53.47	104.84	S00°30'50.5"W	
48-4	878.00	231.18	016°17'22"	118.07	231.18	N04°07'15.0"E
48-5	118.00	007°55'47"	59.87	118.90	N00°20'50.5"E	
48-6	118.00	007°55'47"	59.87	118.90	N17°56'31.5"E	
48-7	1787.00	703.63	008°18'12"	358.32	703.63	N14°11'26.0"E
48-8	800.00	286.63	023°37'30"	148.40	286.59	N48°49'24.5"W
48-9	500.00	289.39	020°53'34"	159.18	289.34	S77°40'43.5"E
48-10	325.00	508.67	009°02'54"	320.50	456.24	S87°44'58.0"W
48-11	580.00	428.10	042°17'24"	224.33	418.45	N68°51'18.0"W

CURVE TABLE

NUMBER	RADIUS	ARC	DELTA	TAN	CHORD	CHORD BRNG
104	1877.00	147.27	004°29'43"	73.69	147.28	N89°59'53.5"W
105	1289.00	386.56	017°18'17"	195.76	387.00	N72°23'33.0"E
106	926.00	48.50	003°00'04"	24.26	48.50	N07°28'13.0"E
107	1309.00	158.71	06°56'48"	79.45	158.61	N82°46'08.0"W
108	1897.00	160.19	04°50'18"	80.14	160.14	N62°39'41.0"E

NOTES:

- P.R.M. Indicates Permanent Reference Monument.
- P.C.P. Indicates Permanent Control Point.
- U.E. Indicates Utility Easement.
- D.E. Indicates Drainage Easement.
- L.S.E. INDICATES LOT STRIATION EASEMENT - ONLY

No buildings or any kind of construction shall be placed on utility or drainage easements.
No structures, trees or shrubs shall be placed on drainage easements.
Approval of landscaping on utility easements other than water and sewer shall be only with the approval of all utilities occupying same.

Bearings shown hereon are based on an assumed bearing of due North along the West line of Section 36, Township 46 South, Range 42 East.

This instrument was prepared by:
John A. Grant, Jr., John A. Grant, Jr., Inc.
3835 North Federal Highway, Boca Raton, Florida 33431

SUBDIVISION # 46
BOOK 46
FLOOD ZONE # 712
GRID # 37
SE # 40
P/D NAME BOCAIRE GOLF CLUB

PAGE 41
FLOOD MAP # 708
ZONING RS
ZIP CODE 33408

0286-302

Handwritten notes and signatures: "46/41", "Post-6", "Shaddock Lane", "Pheasant Walk", "Sugar Pine Drive".